

Maddox Muse Center

McDavid Studio and
Van Cliburn Recital Hall

Technical Specifications



Table of Contents

| | |
|--|-----------|
| <u>General Information and Contacts</u> | <u>3</u> |
| <u>Location and Parking</u> | <u>4</u> |
| <u>McDavid Studio</u> | <u>5</u> |
| <u>McDavid Studio Lighting/Video</u> | <u>6</u> |
| <u>McDavid Studio Audio</u> | <u>7</u> |
| <u>McDavid Studio Dressing Rooms</u> | <u>8</u> |
| <u>Van Cliburn Recital Hall</u> | <u>9</u> |
| <u>Van Cliburn Recital Hall Lighting/Video</u> | <u>10</u> |
| <u>Van Cliburn Recital Hall Audio</u> | <u>11</u> |
| <u>Van Cliburn Recital Hall Ground Plan</u> | <u>12</u> |
| <u>Miscellaneous Information</u> | <u>13</u> |

BASS PERFORMANCE HALL

OWNED & OPERATED BY PERFORMING ARTS FORT WORTH

General Information

Maddox-Muse Center is owned, operated, and maintained by Performing Arts Fort Worth, Inc., a 501(c)3 non-profit organization. Originally the Fort Worth Medical College, the building, located across Calhoun Street from the Nancy Lee and Perry R. Bass Performance Hall, was renovated in 1998 by Performing Arts of Fort Worth, to be used as administrative offices. In 2000, David Schwartz designed the two recital halls (McDavid Studio and Van Cliburn Recital Hall) that were added on to the original building.

Seating Capacity – McDavid Studio/Van Cliburn Recital Hall

250-300 depending on configuration.

Fire Safety

Certified Fort Worth Police and rescue are contracted for any performance or event that uses open flame, smoke, haze, or pyrotechnic effects. Fire Watch requests should be provided as part of the advance and should be submitted to Production no later than 2 weeks before the date of the event.

Production Internet

Bass Performance Hall Wi-Fi is always free and available. To access, connect to BPH Guest, open a web browser, and agree to the terms. Other password-protected networks are available upon request. Please contact Production for any special requests pertaining to special hardwired internet connections or telephones needs.

Security

Performing Arts Fort Worth has security measures in place to provide the safest environment possible for all patrons, artists, and organizations. Security can be found at **Angel Base**, our security hub just inside the Stage Door of Bass Performance Hall located at 555 Commerce St., 24 hours a day. Small package deliveries are also left here for pickup. Security staff are trained to respond to medical emergencies and will contact ambulances, etc. when needed. Please notify Angel Base immediately in case of such an emergency.

Angel Base: 555 Commerce St., Fort Worth, TX 76102; 817-212-4242

Contact Information

Information and scheduling for incoming shows are coordinated through the Production department:

- Scheduling and availability of spaces and equipment.
- Technical and/or production requirements, parking regulations, and permitting.
- General information regarding facilities, equipment, special requests, and fees.
- Hospitality, labor, and settlement.

Production Staff

Jacob Mobberley, Director of Production
817-212-4265 jmobberley@basshall.com

Charles McCormick, Technical Director
817-212-4263 cmccormick@basshall.com

Dylan Walker, Assistant Technical Director
817-212-4269 dwalker@basshall.com

Olivia Gfrorer, Production Technician
817-212-4264 ogfrorer@basshall.com

A full staff directory and additional information can be found at www.basshall.com.

Location and Parking Information

Physical Address – Maddox-Muse Center

301 E. 5th Street
Fort Worth, TX 76102

Stage Door/Loading Dock

550 Jones Street
Fort Worth, TX 76102

Security

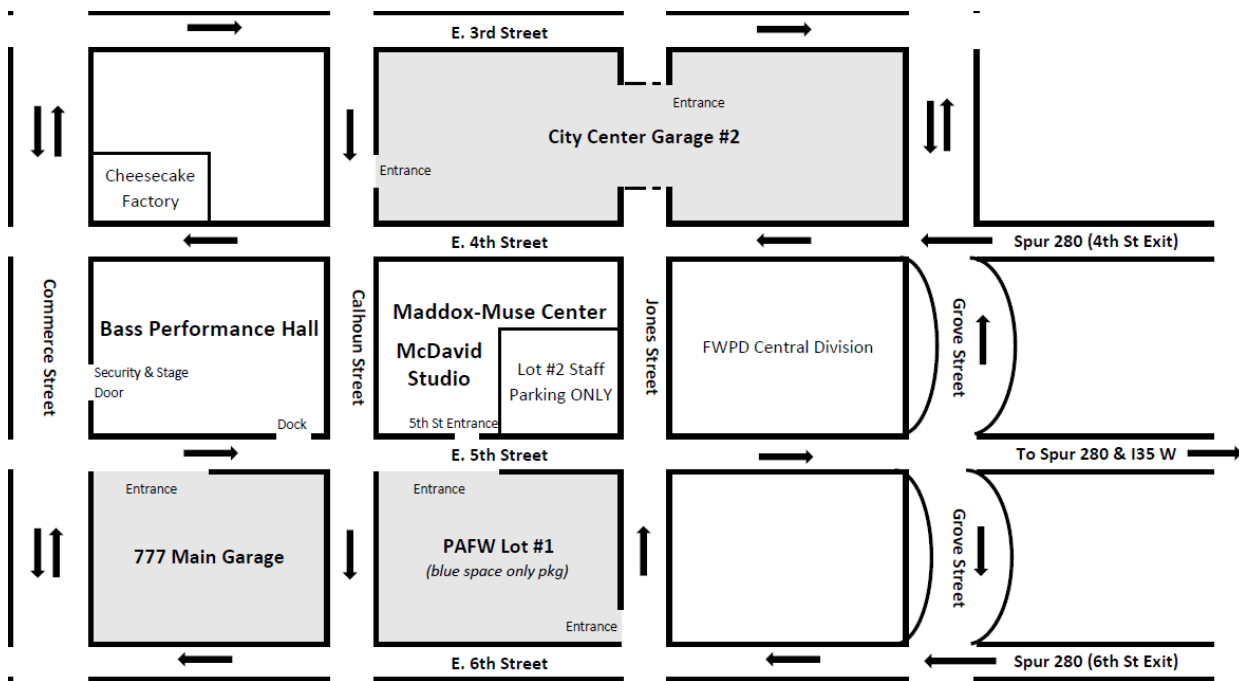
555 Commerce St.
Fort Worth, TX 76102

Truck Parking

- One 26' truck is allowed in the loading zone at a time. Trucks cannot remain after load in.

Other Information

- All production-related deliveries should be directed to the Security address.
- Paid Parking is available at City Center Garage #2 or 777 Main Garage.



McDavid Studio

McDavid Studio is a versatile multi-purpose space located in the Maddox Muse Center at 301 E. 5th Street, across Calhoun Street from Bass Performance Hall. It features off-Broadway productions as well as national and local music acts. In addition, McDavid Studio is available as a rental space and is perfect for hosting any number of events, from corporate meetings to wedding receptions.

Equipment

Events that require additional equipment may potentially be supplemented from other Venue inventories and systems. This equipment is used by multiple events in multiple areas. Availability is limited and must be arranged in advance through venue Production. Labor for setup of additional equipment, as well as additional equipment, will be billed as necessary. **All equipment is subject to availability.**

Floor

The McDavid Studio has a floor consisting of Tongue and Groove maple flooring on 2 x 4 sleepers with resilient pads (impact absorbing). The floor cannot be painted or screwed into. Repair for any damage to floor will be charged at the prevailing rate.

Room Dimensions

53' X 72'

Height

16'9"

Capacity

250-300 depending on configuration.

Power

Dimmer Room: 4- 100Amp, Lighting Power (if available) 1- 60-amp, Hubbell Pin & Sleeve (single phase)*

Catering Supply: 1- 60Amp, Hubbell Pin & Sleeve (single phase)*

North Wall: 5- 20Amp, Audio isolated

*Nutech Distribution box with 20-amp stringer available upon request.

Stage

Wenger StageTek 4' x 8' platforms are used to make the stage in McDavid Studio. Adjustable legs of 8", 16", and 24" heights are available.

*Please contact Production for use of any equipment. **All equipment is subject to availability.***

McDavid Studio - Lighting

Control Equipment

ETC Ion

Dimmable Circuits

48 ETC Sensor dimmer circuits available – Light plot available upon request.

Instrument Inventory

| Type | Wattage | Quantity | Frame Size |
|--------------------------------|---------|----------|-----------------------------|
| ETC Source Four 36º | 575 w | 6 | 6 1/4" |
| ETC ColorSource Spot 90º (LED) | 185 w | 6 | Permanent Install |
| ETC D-40 Vivid (LED) | 110 w | 5 | Over typical stage location |
| ETC ColorSource Par | 90 w | 5 | Over typical stage location |
| Chauvet Colorado TriTour (LED) | 87 w | 22 | Permanent Install |

Cable

10', 20', 30', 50' and 100' socapex, 3, 4 and 5-pin XLR, stage pin and Edison extension available upon request. 6-circuit socapex break-ins/ break-outs, stage pin two-fers and stage pin/ Edison adapters also available.

*Bass Performance Hall lighting inventory can be used in McDavid Studio-subject to availability. Please contact the Production Department for a complete list or visit: <https://www.basshall.com/about/bass-performance-hall/technical-specifications/>

McDavid Studio - Video

Projector

Panasonic PT- RZ970 – 10k Lumen (Laser)

Projection Screen

Roll down 7.5'x14' (16:9) This screen is permanently hung on the north wall of the room.
Da-Lite Fastfold 7.5'X10' (4:3)

Video Playback

Macbook Pro with Qlab & Microsoft suite (Optional & subject to availability.)

McDavid Studio - Audio

Control Equipment

The main system mixer is a Soundcraft Vi3000.

All signal routing and speaker processing is done with BSS London Blu Soundweb processor.

Input Infrastructure

Stage Rack provides 40 XLR inputs and 16XLR outputs (8 mono and 4 stereo).

Console provides 48 XLR inputs and 8XLR outputs Microphones.

Wireless Shure ULXD2 Band Transmitter with Shure SM58 (2 KSM9 capsules available upon request).

Wireless Shure ULXD1 Band Transmitter with Countryman B6 elements.

A full complement of wired microphones available. Tripod and boom base stands are also available. Please contact Production Department for microphone list.

Loudspeakers

(2) Meyer UPQ-2P (Per Side)

(3) Meyer UPJ (Per Side)

(2) Meyer UPJ (Center Fill)

(1) Meyer 700HP (Per side)

(6) Meyer M1D-SM (Front Fill)

Wired in Stereo

Stage Monitors

(6) Meyer UPJ

Assisted Listening System

Williams Sound PPA-T45 transmitter (wireless, operating at 72.1 75.9 MHz) and suitable compliment of PPA- R38 receivers with Shure SE425 earphone for Assisted Listening.

Cable

10', 20', 30', 50' and 100' XLR. Audio Snakes and quad boxes depending on availability.

McDavid Studio – Dressing Rooms

(dressing rooms conform to Actor's Equity Association Standards)

| Room | Normal Use | Capacity |
|-------------------------|-----------------------|---------------------------------|
| Dressing Room #1(Left) | Principal Artist/Band | 6-8 People (w/ Shower & Toilet) |
| Dressing Room #2(Right) | Principal Artist/Band | 4-6 People (w/ Shower & Toilet) |



Van Cliburn Recital Hall

Van Cliburn Recital Hall is a multipurpose performance space with outstanding acoustics. Van Cliburn Recital Hall is available as a rental space and is perfect for hosting your upcoming wedding, party, meeting or corporate event.

Equipment

Events that require additional equipment may potentially be supplemented from other Venue inventories and systems. This equipment is used by multiple events in multiple areas. Availability is limited and must be arranged in advance through venue Production. Labor for setup of additional equipment, as well as additional equipment, will be billed as necessary. **All equipment is subject to availability.**

Floor

Van Cliburn Recital Hall (VCRH) has Mesquite flooring on 2 x 4 sleepers – this is not a sprung floor. The floor cannot be painted or screwed into. Repair for any damage to floor will be charged at the prevailing rate.

Room Dimensions

52' X 67'

Height

21' to the grid

Capacity

250-300 depending on configuration.

Power

Catering Supply: 1- 60Amp, Hubbell Pin & Sleeve (single phase)*

South Wall: 1-20Amp, Audio isolated

*Nutech Distribution box with 20 amp stringer available upon request.

Stage

Wenger StageTek 4' x 8' platforms are used to make the stage in Van Cliburn Recital Hall. Adjustable legs of 8", 16", and 24" heights are available.

*Please contact Production for use of any equipment. **All equipment is subject to availability.***

Van Cliburn Recital Hall - Lighting

Control Equipment

ETC Element - 60 Faders, 250 Channels 1 Universe optional 2nd Universe.

Dimmable Circuits

12 ETC Sensor dimmer circuits available – light plot available upon request.

Instrument Inventory

| Type | Wattage | Quantity | Frame Size |
|----------------------------|---------|----------|------------------------|
| ETC Junior 50 ^º | 575 w | 14 | 6 ¼" |
| ETC Junior 26 ^º | 575 w | 0 | 6 ¼" |
| ETC ColorSource PARs (LED) | 89w | 24 | Permanent House Lights |
| ETC Selador Vivid R | 144w | 20 | Permanent Wall Washes |

Cable

10', 20', 30', 50' and 100' socapex, 3, 4 and 5-pin XLR, stage pin and Edison extension available upon request. 6-circuit socapex break-ins/ break-outs, stage pin two-fers and stage pin/Edison adapters also available.

*Bass Performance Hall lighting inventory can be used in Van Cliburn Recital Hall-subject to availability. Please contact the Production Department for a complete list or visit: <https://www.basshall.com/about/bass-performance-hall/technical-specifications/>

Van Cliburn Recital Hall - Video

Projector

Panasonic PT- RZ970 – 10k Lumen (Laser)

Projection Screen

Roll down 7.5'x14' (16:9) This screen is permanently hung on the north wall of the room.
Da-Lite Fastfold 7.5'X10' (4:3)

Video Playback

Macbook Pro with Qlab & Microsoft suite (Optional & subject to availability.)

Van Cliburn Recital Hall - Audio

Control Equipment

Allen & Heath Zed-18, 10 analog channels + 4 instrument inputs and USB output.

Allen & Heath SQ5 pending availability.

Input Infrastructure

All signal routing and speaker processing is done with BSS London Soundweb processor.

All amplifiers are by Crest Audio.

Microphones

Shure ULXD2 Band Transmitter with Shure SM58.

Shure ULXD1 Band Transmitter with countryman B6 Lavaliers.

Wireless Shure ULXD2 Band Transmitter with Shure SM58 (2 KSM9 capsules available upon request)

Wireless Shure ULXD1 Band Transmitter with Countryman B6 elements.

A full complement of wired microphones are available. Tripod and boom base stands are also available. Please contact Production Department for microphone list.

Loudspeakers

(6) EAW JF200e

(2) EAW SB250

Evenly distributed throughout the ceiling all shooting straight down.

Stage Monitors

(6) Meyer UPJ

Assisted Listening System

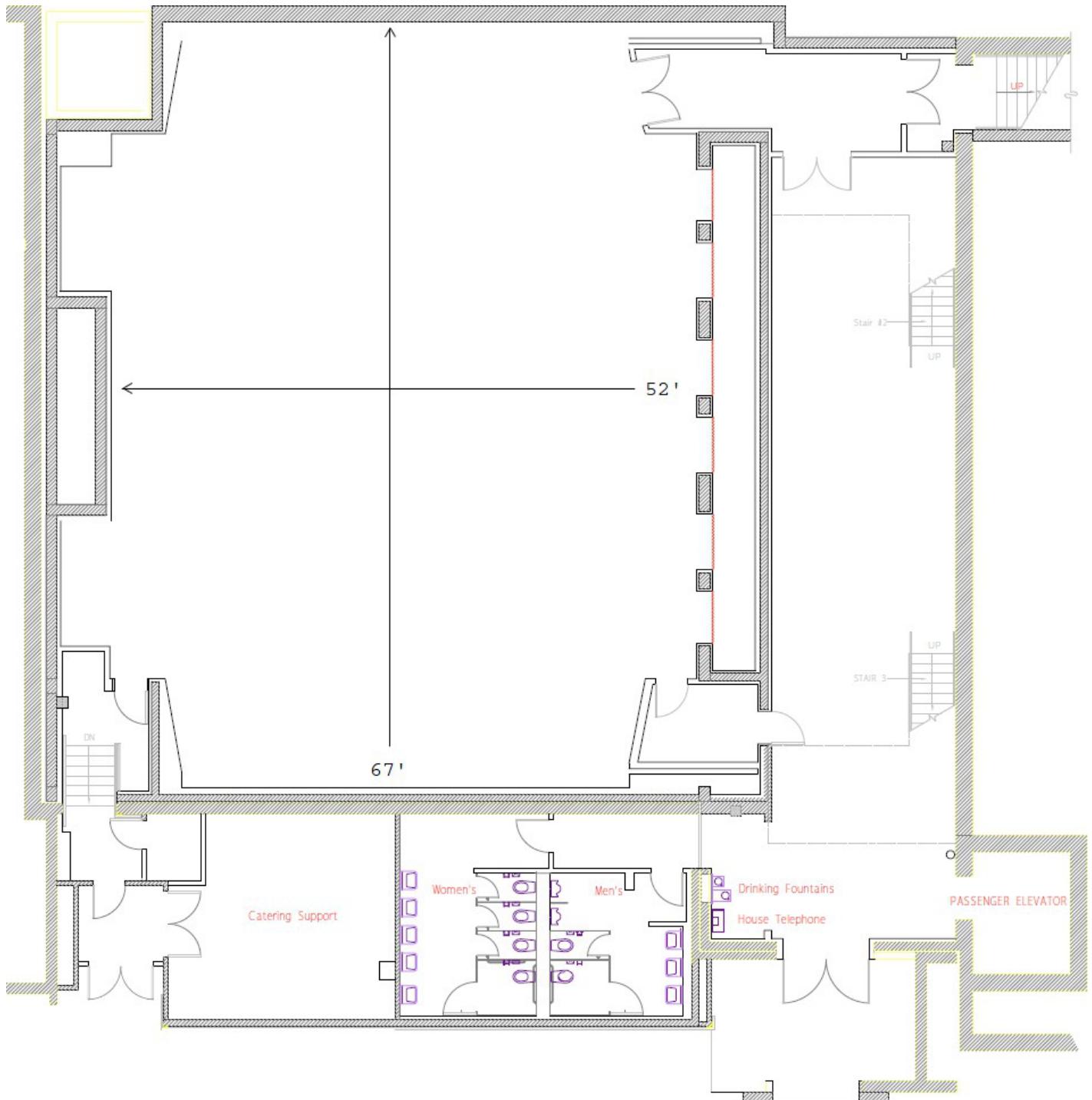
Williams Sound PPA-T45 transmitter (wireless, operating at 72.1 75.9 MHz) and suitable compliment of PPA- R38 receivers with Shure SE425 earphone for Assisted Listening.

Cable

10', 20', 30', 50' and 100' XLR. Audio Snakes and quad boxes depending on availability.

Van Cliburn Recital Hall - Ground Plan

(VCRH does not have any dressing rooms.)



Miscellaneous Information

Support Areas

Maddox Muse has multiple support areas that may be utilized for any production or event.

- Canteen Catering Support
- Van Cliburn Catering Support
- McDavid Studio Catering Support

Additional Equipment

Tables: 30", 60", 66", 72" Rounds

6' Rectangle

Chairs: 300 White Garden Chairs

300 Black Mesh Chairs

Lectern, multiple options

Please contact Production or Hospitality for use of any equipment listed above. All equipment is subject to availability.

Stage Equipment

(1) 40' single person Genie lift

(1) 19' Genie scissor lift

(1) 19' single person roundabout Genie lift

(6) Black/Gray Rosco Marley

6', 8' and 10' stepladders

Dollies, hand trucks, flat bed and sheet carts

Pianos

(2) 9' Steinway (Requires 3rd Party Rental)

(1) 7' Yamaha C7

(1) Yamaha upright

Orchestra Equipment

(100) Manhasset music stands

(65) Stand lights

(80) Musician chairs

(20) Cello chairs

(4) Bass stools

(1) Conductor stand

Production Internet

Hardwired internet connections are available for rent on request with locations in most backstage and event areas. Bass Performance Hall Wi-Fi is free and available at all times. To access, connect to BPH Guest, open a web browser and agree to the terms.

Please contact Production for any special requests pertaining to special hardwired internet connections or telephones needs.

Security

As the owners and operators of Bass Performance Hall, Performing Arts Fort Worth has security measures in place in an effort to enhance comfort and provide the safest environment possible for our patrons, artists, and organizations that call Bass Hall home. Please visit our Security section on Bass Hall's website for the latest information and procedures.